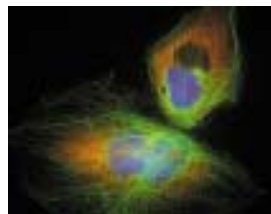
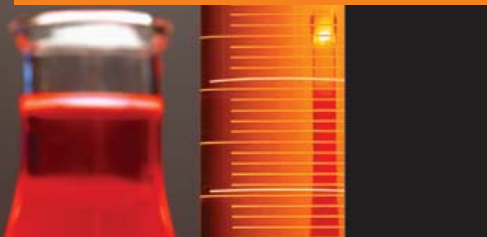


dd	z700	9.88
dd	28186	61.15
15	7266	12.22
dd	100591	6.45
33	10606	40.9
dd	2965	1.6
24	1295	39.5
...	z98091	12.6
18	2512	44.9
dd	4554	30.8
...	4981	39.9
13	1913	25.8
11	z18326	12.8
dd	z79230	22.1
...	28164	1.0
11	z20518	5.9



FALL 2004

INTELLECTUAL PROPERTY QUESTION & ANSWER

Q As a researcher, my highest priority is sharing knowledge within my field, both to advance research and to meet my performance expectations. If I disclose my work to your office, will I still be allowed to publish and communicate with my peers?

A Yes. In fact, OTC encourages the researcher to present the technology in as many venues as possible after the work has been protected. However, if an invention is disclosed or made available to any person skilled in the art prior to declaring the invention to the proper authorities, chances are good that patent rights will be lost forever. Let OTC know about your work by submitting an invention disclosure at least thirty days prior to conference engagements, paper publications, or any other form of public disclosure. If warranted, OTC will file the appropriate documentation to ensure the work is legally protected.

Q I have an idea for an invention with great commercial potential. When should I submit a disclosure form?

A A disclosure form should be submitted to OTC once the researcher can concisely define the invention and has reduced the invention to practice through modeling or experimentation. Ideas without data cannot be patented, and generally do not generate commercial interest. You can find the invention disclosure form on our website, www.RPItechnology.com.

HAVE AN IP QUESTION?

Contact Art Holmer, Patent Associate,
at 276-3762 or holmea@rpi.edu

OTC Launches New Website

OTC would like to present our new website, www.RPItechnology.com. This site allows users to search the portfolio of RPI inventions by category, inventor or keyword. It also allows users to register for email notifications as new technologies are released. Visit today to learn more about OTC activities and to view the portfolio of license-ready technologies.

Got Software?

In conjunction with the launch of the new office website, OTC is considering the option to build a web-based licensing portal for software written by RPI researchers. The portal would be non-invasive for the researcher, minimally invasive for the user, and would allow software to be licensed without a fee for educational or research use. OTC is now mining the campus to determine the demand among researchers for this service. If you have developed license-ready software with commercial applications and would like to know more about electronic licensing, please contact Kris Burton at 276-3675 or burtok2@rpi.edu.

Message from the Director



Chuck Rancourt
OTC Director

2004 has been a year of extraordinary growth for the OTC. We will end the year with five new staff members, new processes for supporting research efforts, and a renewed vision for moving RPI technology into the marketplace. The OTC and the Incubator Program are now clustered under a group called Intellectual Property, Technology Transfer and New Ventures lead by Executive Director Ron Kudla. The mission of this new unit is to manage

Rensselaer's intellectual property through the process of protection, marketing and licensing, and to facilitate the generation of successful new ventures.

With the new infrastructure in place, one of the next priorities of this office is to expand researcher awareness regarding commercialization and the Rensselaer IP Policy. We received ninety-one invention disclosures in fiscal year 2004, a number which we expect to match or exceed this fiscal year. For our office to operate efficiently under this volume, each disclosure must be completed thoroughly and must include supporting proof-of-concept data. Newly added staff will enable OTC to develop more personal relationships with researchers, which will enhance disclosure quality, and also enable OTC to spend more time marketing technologies from the current patent portfolio. We look forward to building relationships with new faculty, and to continued relationships with established contributors.

NEW PATENTS ISSUED

Thyristor having one or more doped layers

Tatsing Chow, Jeffrey Fedison
Case #558, Patent # 6,787,816
Issued September 7, 2004

Gelatin Nanocomposites

Tao Li, Linda Schadler, Richard Siegel,
John Mendel, Glen Irvin
Case #654, Patent # 6,783,805 Issued
August 31, 2004

Light-Emitting Diode with Planar Omni-Directional Reflector

Fred Schubert
Case #759, Patent # 6,784,462
Issued August 31, 2004

8-Carboxamido-2,6-Methano-3- Benzazocines

Mark Wentland
Case #629, Patent # 6,784,187
Issued August 31, 2004

Ultrafast all-optical switch using carbon nanotube polymer composites

Pulickel Ajayan, Yuchuan Chen, Toh-
Ming Lu, Nachiket Raravikar, Linda
Schadler, Gwo-Ching Wang, Xi-Cheng
Zhang, Yiping Zhao
Case #644, Patent # 6,782,154
Issued August 24, 2004

Transition metal-based superoxides as novel heterogeneous initiators for free radical polymerizations

Brian Benicewicz, Subbareddy
Kanagasabapathy, Arumugam Sudalai
Case #603, Patent #6,765,076
Issued July 20, 2004

Activators of Endothelial Nitric Oxide Synthase

John Salerno
Case #645, Patent #6,750,197
Issued June 15, 2004

IP Education: The importance of timely signatures

Almost every stage of the patent process introduces documents that require inventor signatures. Every revision, even to correct typos, requires a signed review. Each signature requirement introduces a chance for delay, extension fees and additional legal expenses. These expenses ultimately reduce the license income returned to inventors and the university, but even worse, delays in returning documents can result in the abandonment of the file by the patent office. The paperwork burden on busy inventors can be overwhelming, but considering the costs, it is important for documents to be signed and returned as promptly as possible.

Steps to avoid delays:

- ◆ Review the draft application carefully. Errors discovered later require the creation of an entirely new draft, and another round of review and signatures.
- ◆ Sign and return requested documents as quickly as possible, and encourage your co-inventors to do the same. If the patent office requests a document that is missing from the application, it must be completed, signed and received within two months or the application may be abandoned.
- ◆ Remember that signing or withholding a signature does not change the ownership status of the intellectual property. The university can take steps to patent without inventor signatures, but it benefits all parties to move through the patenting process as quickly as possible.

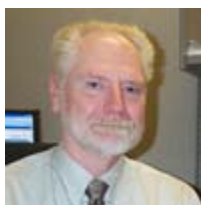
Documents that require inventor signatures:

- ◆ *The Declaration* is a statement submitted with the patent application that serves as a legal oath of inventorship, and provides the names and addresses of the inventors. The Declaration is required by statute, and must be signed by the inventors upon reading a true copy of the application as filed. If the Declaration is not signed within the time period set by the patent office in the Notice to File Missing Parts (generally two months) the application will be abandoned.
- ◆ *The Assignment* is also typically signed by inventors, but failure to do so will not result in the abandonment of the application. However, most commercialization efforts will require recordation of the title.
- ◆ *Power of Attorney* is required for PCT or international patent applications. Although it is not required for U.S. applications, it is considered a good practice by patent attorneys as a tool to define the scope of the client/attorney relationship.

X *J. Q. Inventor*

Meet the Patent Associates

Patent Associate is a new role at OTC, and we are glad to have two individuals with industry experience filling the positions. Art or Kellie, depending on the field of discipline, conduct the initial assessment of invention disclosures submitted to the office. Your Patent Associate will guide you through the disclosure review process and answer your patent questions.



Art Holmer, Ph.D.
Patent Associate
Physical Sciences
518-276-3762
holmea@rpi.edu



Kellie Fredericks, MBA
Patent Associate
Life Sciences
518-276-3761
fredek@rpi.edu